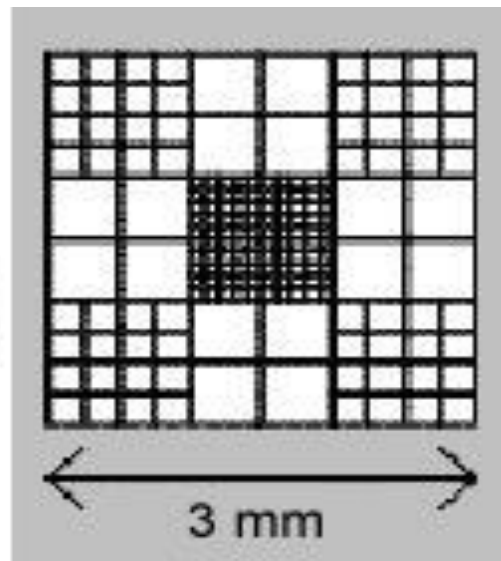
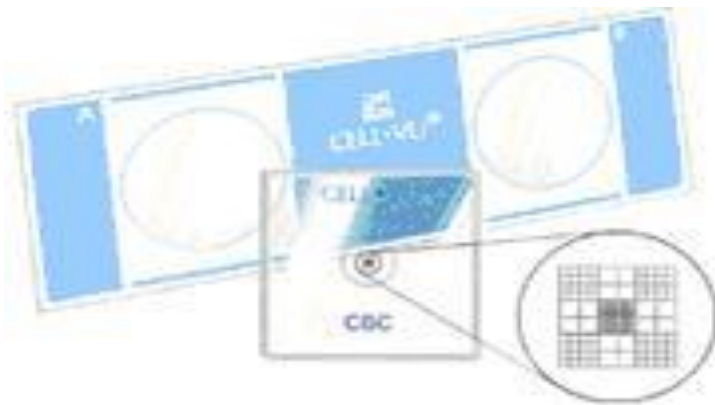




9

1mm, 0.1mm,

0.1mm³.



16

25

25

16

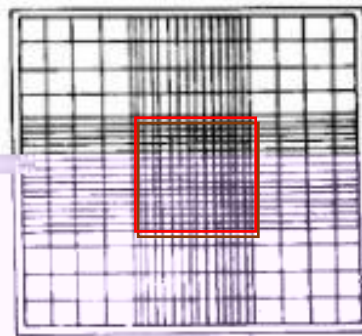
$$16 \times 25 = 25 \times 16 = 400$$



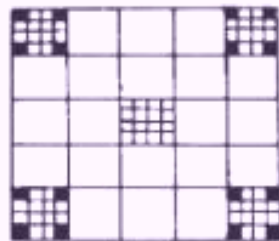
(a) 正面图



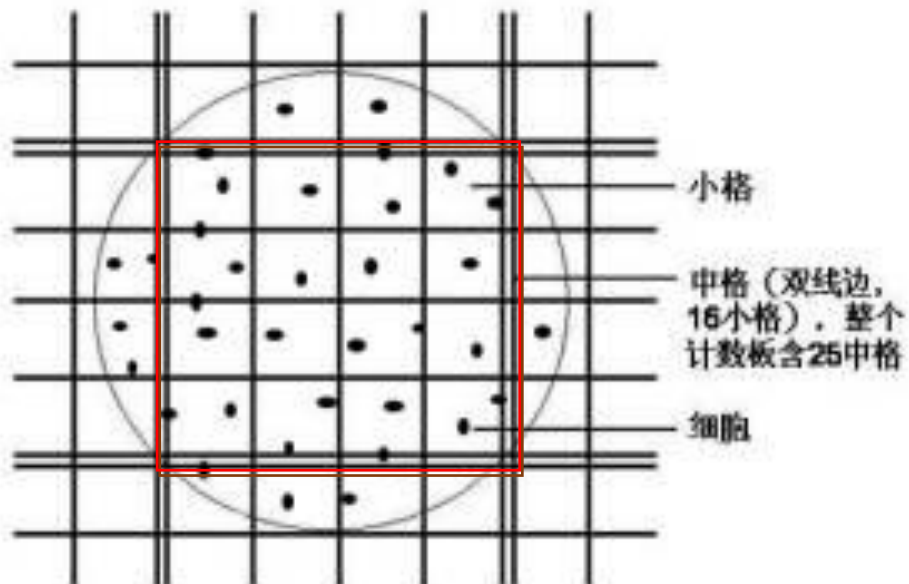
(b) 纵切面图



(c) 放大后的方格网计数室



(d) 放大后的计数室
血球计数板的构造

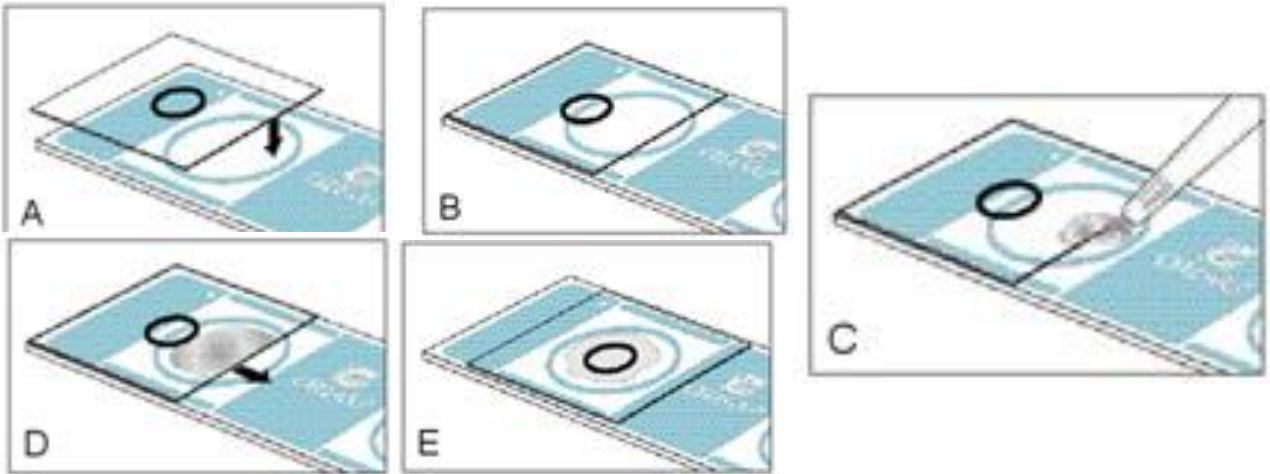


(1)

(2)

4-5

10



(1)

(2)

(3)

(4)

$$\frac{16}{25} \times 25$$

4

(100)

$$\frac{25}{80} \times 16$$

4

(80)

(5)

(

).

(6)

1ml

3.

(1) 16 × 25

:

/ml = 100

/100x 400x 10⁴x

(2) 25 x16

:

/ml = 80

/80x 400x 10⁴x

4.

95%