

6 0 4 P " D 0

1.

2.

2

63U CX

-1 -12 -1 -23 -2 -32 -5 - 5

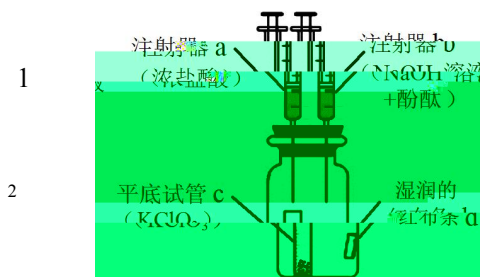
N

4

2

2

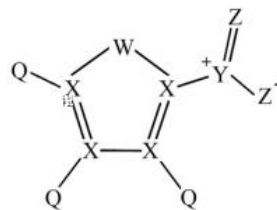
5



3 3 2 2 2 2 1 4 3 3 3 11 2

2 2 2 $\xrightarrow{\text{通电}}$ 2 2 2

2⁺ + 3 2 + 2⁺ + 2
2⁺ + 4² 4



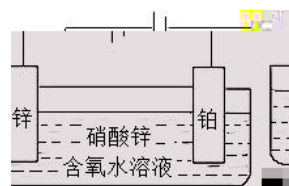
()₂

()₂

3 + 2 + 2 2 + 2

2 + 2 2 + 4 4

2⁺

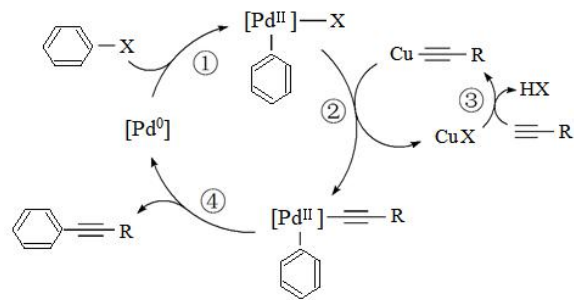


0.1

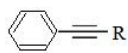
2

()₂

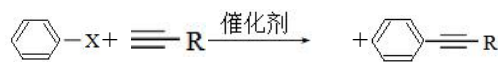




0



2 3



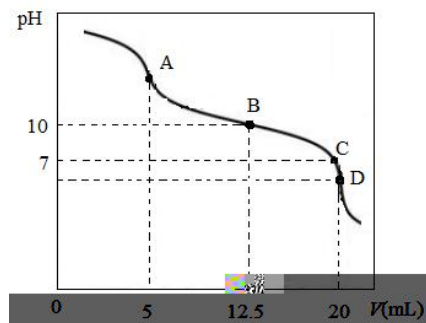
10

5

5

$$c(\text{H}^+) = c(\text{OH}^-) + c(\text{S}^{2-})$$

$$K_{10} = \frac{c(\text{S}^{2-})}{c(\text{HS}^-) \cdot c(\text{H}^+)}$$



5

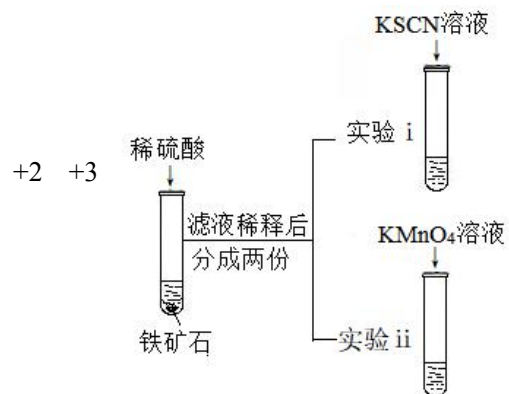
60

11. 13

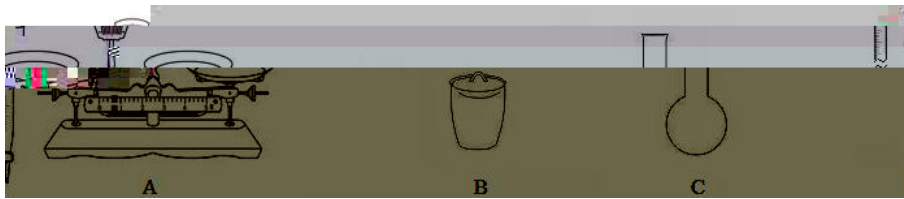
1

2

+3



1 0.3000 2 3 2 2 00
 10 2 1 2
 2 100
 3 1-2
 1 2 2 3
 2 2 3² + 2 4 2 + 2 2 2⁺+4 2 + 2
 3

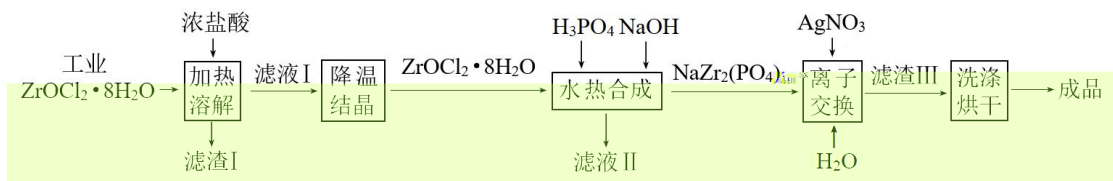


4 2
 5 3

/	0	1	3	5	10
/%	25.	2 . 3	2 . 3	2 .	2 .10

12. 13

2 2 2 3 2



$K ()_2 . 3 10^{-4}$

1 "
 2 "
 3 " 1 0 10

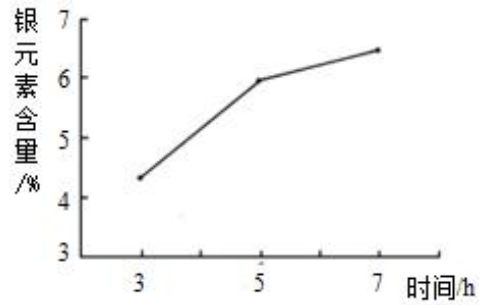
/	0	1		10
	1. 0	0. 5	0.50	0.50

0
2+

()₂ ()₂

1

4 " " + 2(4)₃

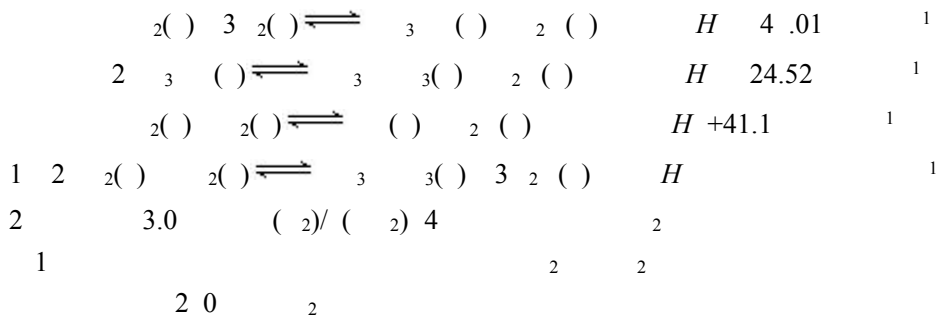


5

5

13 14

2



1 300 3 3

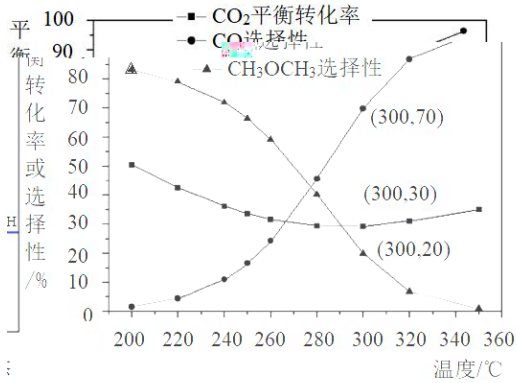


图1

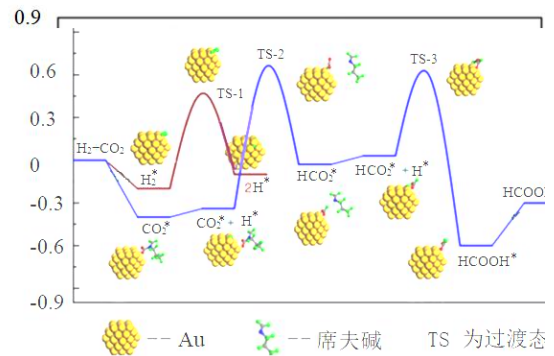


图2

2

*

2

3

4

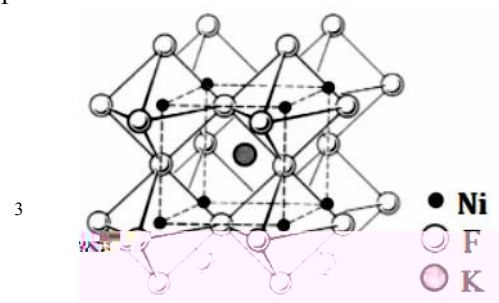
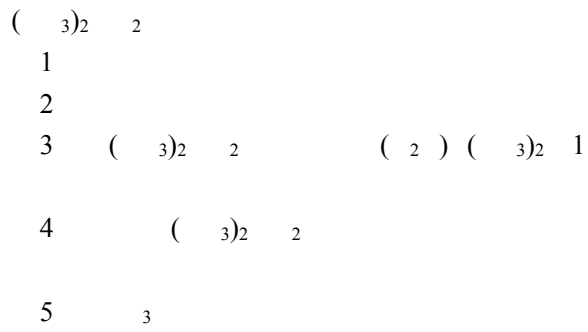
2

2

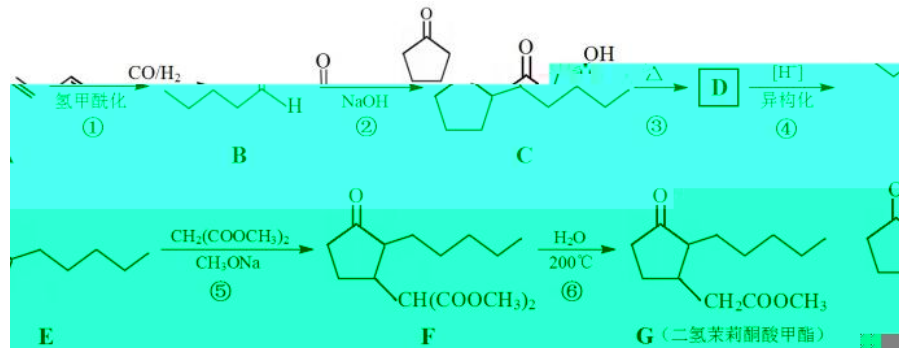
2



14 10



15 10



1

2

3

4 1

5 3 3 1

1