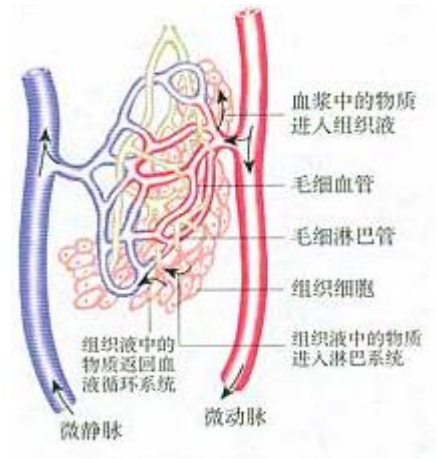


图 1-3 细胞直接与内环境进行



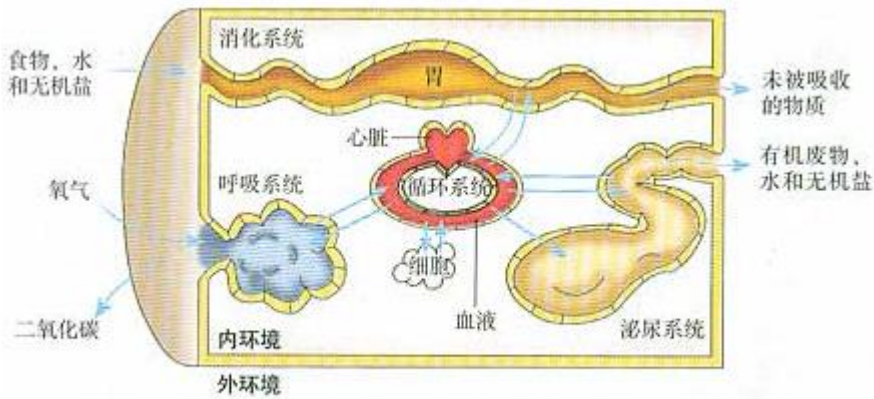
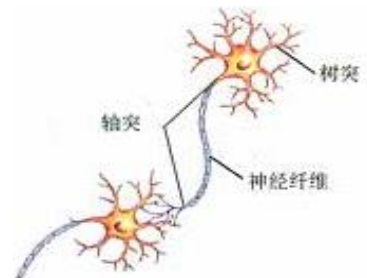
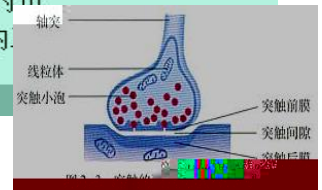
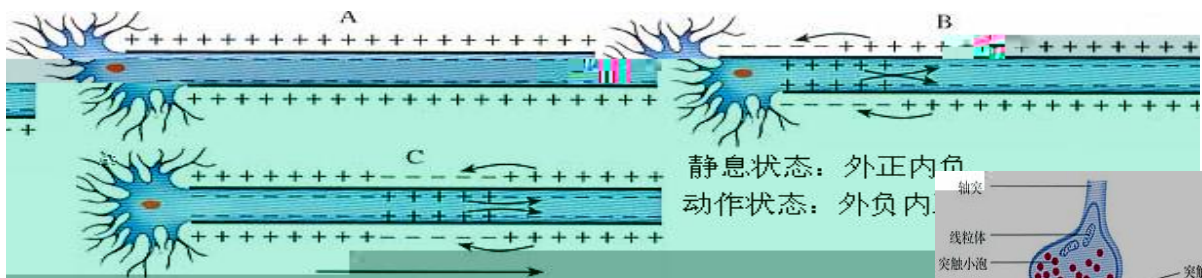
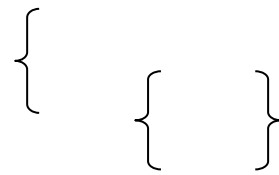


图 1-4 内环境稳态与消化、呼吸、循环、排泄系统的功能联系示意图



A. 神经元结构模式图



}

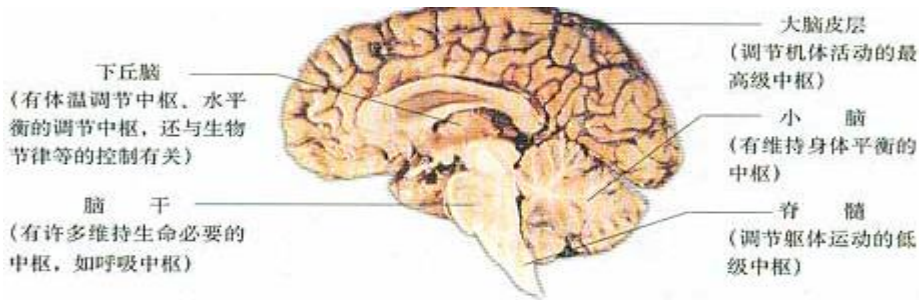
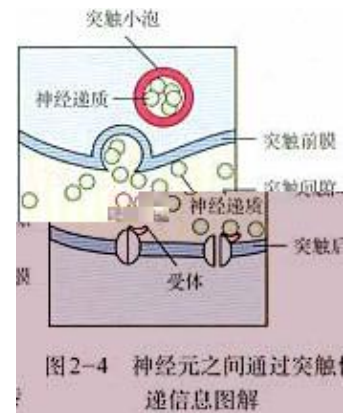


图 2-5 各级中枢示意图

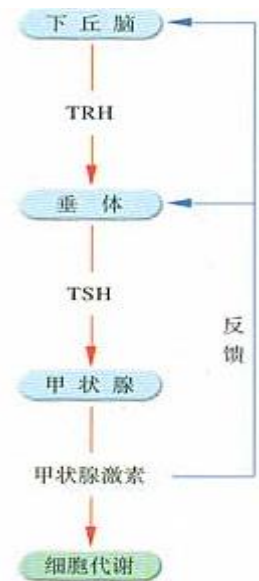


图2-11 甲状腺激素分泌的分级调节示意图

→ →
→ → →

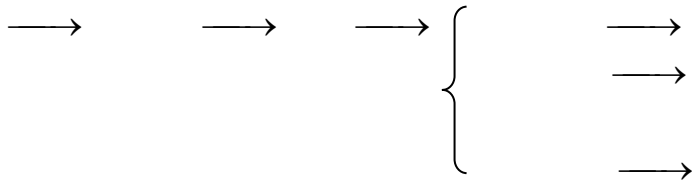
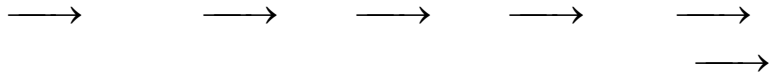
}

{

}

}

{



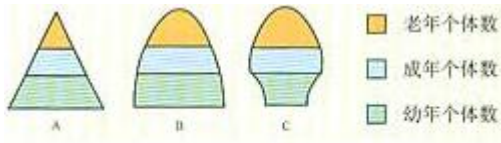


图4-3 种群年龄组成的三种类型

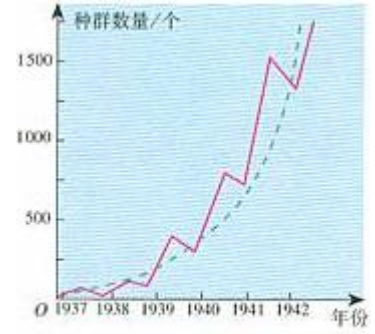
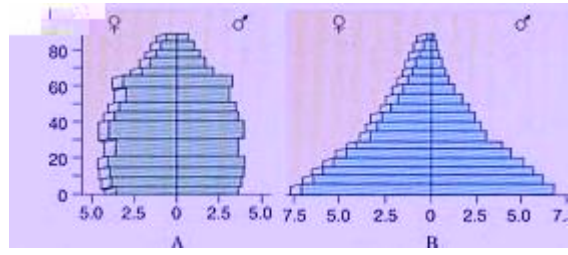


图4-5 某岛屿环颈雉种群数量的

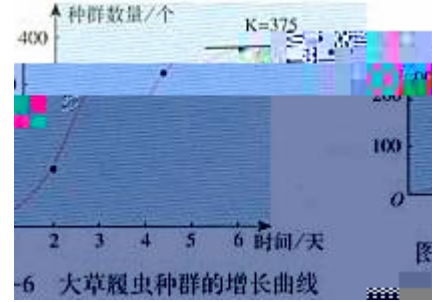
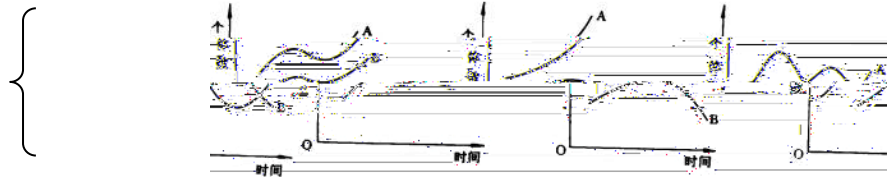


图4-6 大草履虫种群的增长曲线



→ →

}

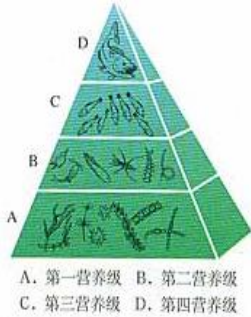


图5-9 某一个湖的能量金字塔

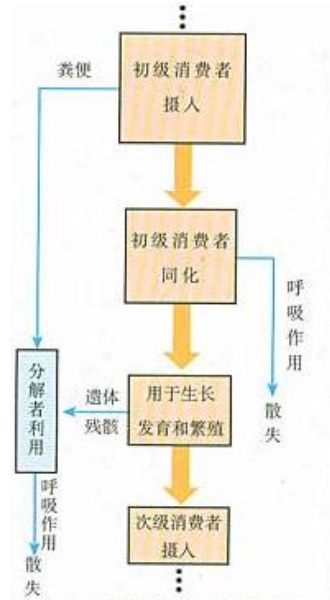
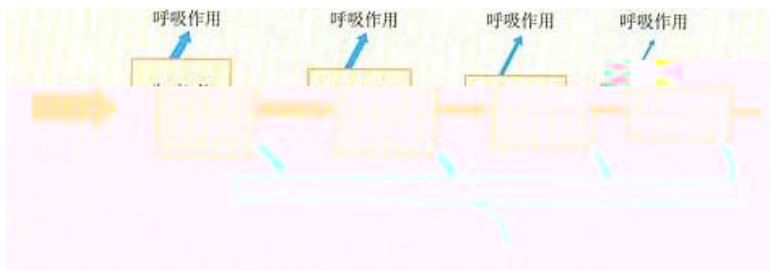
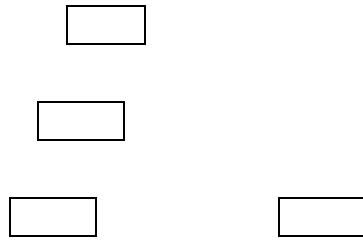


图5-6 能量流经第二营养级示意图

}



}

}